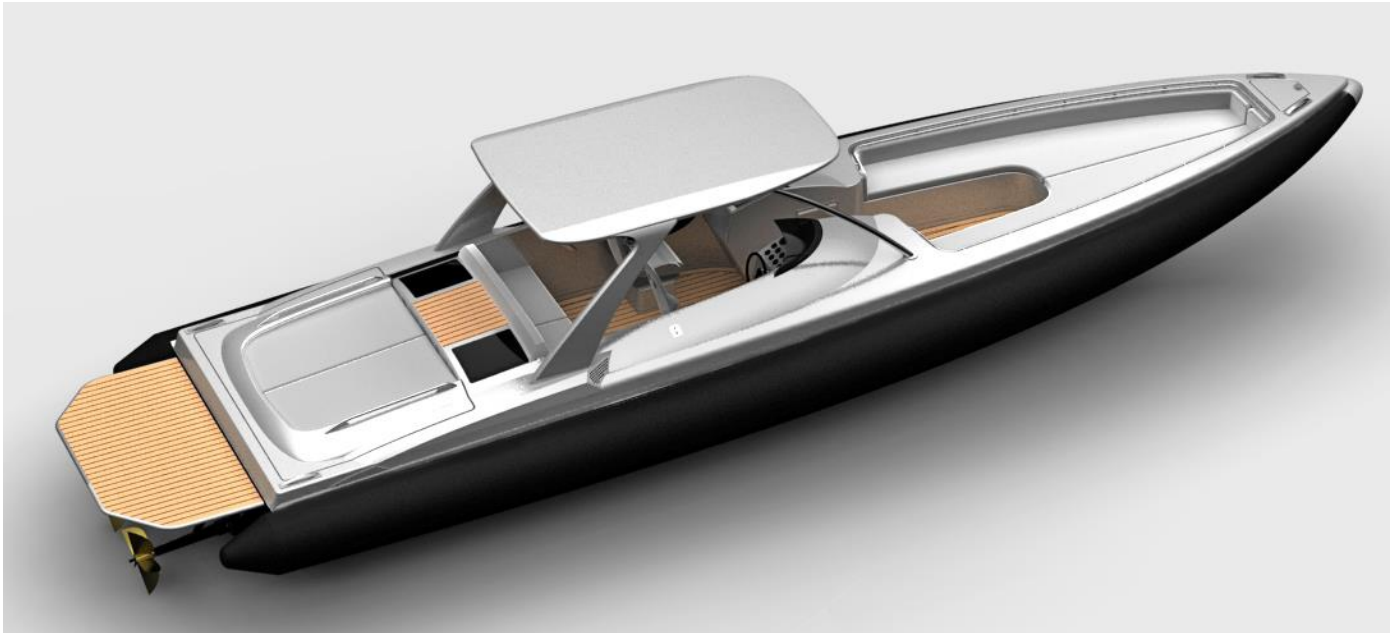


FRECCIA-1200



Freccia 1200 represents the state of the art of Naumatec production.

Inspired by a strong passion for competition, this RIB is the perfect combination of a performing hull and a clean and sophisticated design that has always been a trademark of the work of designer Federico Fiorentino.

The choice of a lay-out focused on safety, comfort and conviviality, has led not to use a typical central console, trying to obtain a single continuous space, where the guest is protected and always "in touch" with other people on board, without any obtrusive obstacles.

a perfectly and harmoniously integrated cabin can be equipped with toilet, small stove and refrigerator. As optional, a fiberglass T-top that offers the comfort of a sun protected area.

Made of highest quality resins, using the infusion technique, the boat is finished with deck fittings, coatings and accessories of the highest quality, according to the idea that every detail must contribute to a highest product level.

Freccia 1200 is the ideal companion for a daily cruise, the ideal tender to a big yacht or a villa, whenever a fast, comfortable, exclusive, safe and easy to use boat is needed to move quickly around in style.

At a glance, three are the concepts that, fused together, lead to this 12 meters masterpiece: high performance that meets Italian Style and the comfort typical of the Mediterranean lifestyle at sea.





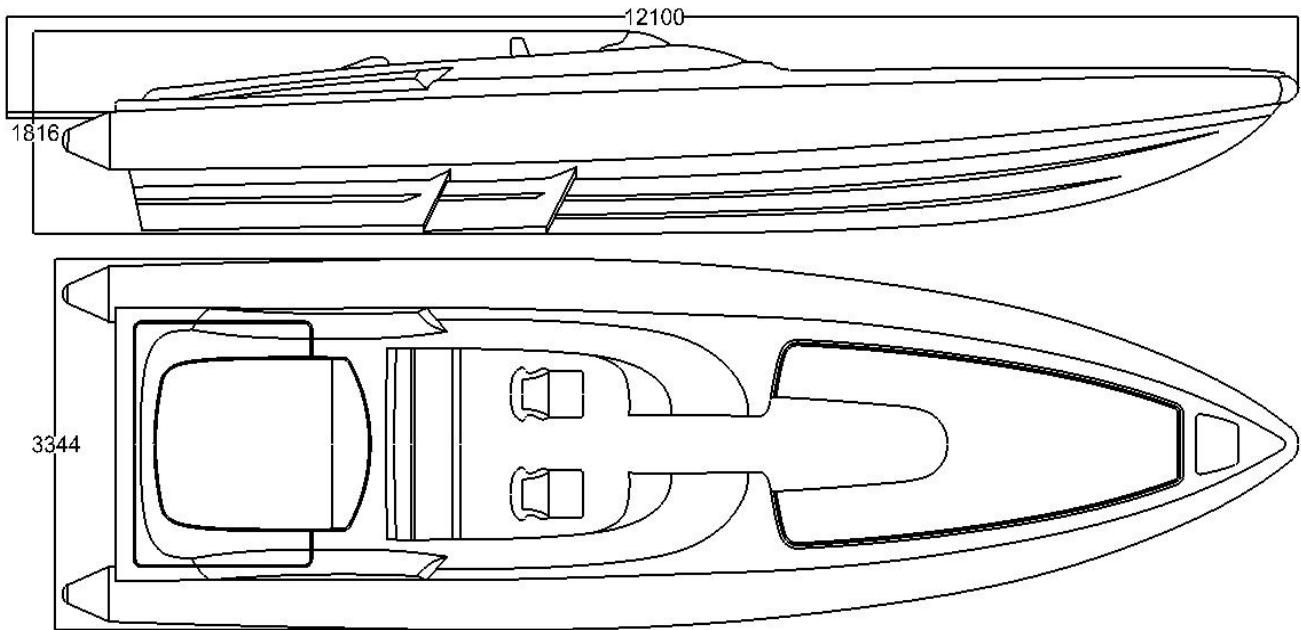
TECHNICAL SPECIFICATIONS:

Length (m): 11,60 in stern drive conf / 12,10 in outboard conf
Width (m): 3,35
Height (m): 1,90 (2,90 with T-top)
Dry Weight (kg): from 5300
Capacity (pax): 12
Design Category: C
Max Power (HP): 2 x 600 Hp Gas, 2 x 500 Diesel
Detected speed: 65 knots with 2x420 Hp Gas

ENGINE CONFIGURATIONS PROPOSED:

2 x Mercruiser 4.2 TDI 370 Hp DTS Diesel Bravo Drive
2 x Cummins QSB 6.7 480 Hp Diesel Arneson Surface Drive
2 x Mercruiser 6.2 L DTS 350 Hp Gas Bravo Drive
2 x Mercruiser 8.2 MAG HO 430 Hp Gas Bravo Drive
2 x Volvo V8 430 Hp Gas Volvo Drive
3 x Mercury Verado 300 Hp Gas Outboard
2 x Mercury Verado 400 Hp Gas Outboard





STANDARD EQUIPMENT:

Gel coat white colour (RAL 9010)
 Hypalon tubes in cream white colour
 Teak coated deck
 Bathing platform in painted aluminium
 Retractable bathing ladder
 Small cabin - to be equipped on demand
 Bow with electric windlass
 Retractable navigation light
 Retractable mooring cleats
 Deck LED lights
 S/S handrails at bow
 Shower system
 Full cushions set
 Hauling system
 Electric inflator

OPTIONALS PROPOSED:

Custom colour finishing – Gelcoat or Paint
 Custom colour Hypalon tubes
 Hard top
 Audio system Raymarine
 Gps chart plotter Raymarine
 VHF with AIS Receiver
 Underwater lights
 Fridge
 Courtesy handle
 S/S towing reinforced hook
 Water ski pole
 Spray dodger
 Boat cover
 S/S logo
 ...

